

OPERATION, PARTS AND **SAFETY** MANUAL

MIP[®] Midwest
Industrial
Packaging

MIPGRIP-114T

BATTERY POWERED TENSIONER

NOTE: Fully charge battery before first use of tool.

**IMPORTANT!
DO NOT DESTROY**

It is the customers responsibility to
have all operators and servicemen
read and understand this manual.

Contact your local sales representative
for additional copies of this manual.

READ ALL INSTRUCTIONS BEFORE OPERATING THIS PRODUCT

WARNING

**READ THESE INSTRUCTIONS CAREFULLY.
FAILURE TO FOLLOW THESE INSTRUCTIONS CAN RESULT IN SEVERE PERSONAL INJURY.**

1. STRAP BREAKAGE HAZARD

Improper operation of the tool or sharp corners on the load can result in strap breakage during tensioning, which could result in the following:

- A sudden loss of balance causing you to fall.
- Both tool and strap flying violently towards your face.

Failure to place the strap properly around the load or an unstable or shifted load could result in a sudden loss of strap tension during tensioning. This could result in a sudden loss of balance causing you to fall.

Read the tool's operating instructions. If the load corners are sharp use edge protectors. Place the strap correctly around a properly positioned load.

- Positioning yourself in-line with the strap, during tensioning and sealing, can result in severe personal injury from flying strap or tool. When tensioning or sealing, position yourself to one side of the strap and keep all bystanders away.
- Using strap not recommended for this sealer can result in strap breakage during sealing. Use the correct MIP products for your application.

2. TOOL CARE

Take good care of the tool. Inspect and clean it daily, lubricate it weekly and adjust when necessary. Replace any worn or broken parts.

3. WORK AREA

Keep work areas uncluttered and well lighted.

4. FALL HAZARD

Maintaining improper footing and/or balance when operating the tool can cause you to fall. Do not use the tool when you are in an awkward position.

5. STRAPPING

Several types of strap can be used with this tool. Use the correct MIP products for your application. If you need help contact your sales Representative.

6. CUTTING TENSIONED STRAP

Use only cutters designed for cutting strap; never use claw hammers, crowbars, chisels, axes or similar tools. Such tools will cause the strap to fly apart with hazardous force. Before using any MIP product, read its Operation and Safety Manual.

WARNING

**READ THESE INSTRUCTIONS CAREFULLY.
FAILURE TO FOLLOW THESE INSTRUCTIONS CAN RESULT IN SEVERE PERSONAL INJURY.**

7. GUARD AGAINST ELECTRIC SHOCK

8. CONSIDER WORK AREA ENVIRONMENT

- Prevent body contact with grounded surfaces, such as pipes, radiators, ranges, refrigerator enclosures.
- When tool and charger are used outdoors, use only extension cords intended for outdoors and so marked.
- Wear protective gloves and non-skid footwear when working outdoors.
- Do not expose power tools directly to rain.
- Never operate tool in presence of gases or flammable liquids.

9. Never allow visitors to contact tool or extension cords. All visitors should be kept away from work area.

10. DO NOT ABUSE TOOL

- Keep handle dry, clean and free from oil and grease.
- Always keep cord from heat, oil and sharp edges.
- Always store idle tool in dry, high or locked-up place.
- Always remove battery from tool when not in use or before servicing.
- To avoid unintentional starting, never carry plugged-in tool with finger on switch.

11. MAINTAIN TOOL WITH CARE

Check Damaged Parts. Check for alignment of moving parts, binding of moving parts, breakage of parts, mounting, and any other condition that may affect its operation. A guard or other part that is damaged should be properly repaired or replaced by an authorized service center unless otherwise indicated elsewhere in this instruction manual. Have damaged switches replaced by authorized service center. Do not use tool if switch does not turn it on and off.

- When servicing double insulated tool, use identical replacement parts.
- Keep tool clean for better and safer performance.
- Inspect tool, battery and charger periodically and, if damaged, have repaired by authorized service facility.

12. USE FOR THE INTENDED PURPOSE

This tool is designed for bundling round packages with steel strapping.

POSSIBLE MISUSES

The use of any other strapping material may void this tool's warranty.

WARNING



TRAINING

Read the operating instructions carefully. This tool must not be used by persons not properly trained in its use. Be certain that you receive proper training from your employer. If you have any questions contact your sales representative.



EYE INJURY HAZARD

Failure to wear safety glasses with side shields can result in severe eye injury or blindness. Always wear safety glasses with side shields which conform to ANSI Standard Z87.1 or EN 166.



CUT HAZARD

Handling strap or sharp parts could result in cut hands or fingers. Wear protective gloves.



SOUND PROTECTION

When operating the tool, wear ear protection.



ENVIRONMENTAL PROTECTION

Charger and batteries should be sorted for environmental-friendly recycling. Do not open the battery. Do not throw the used battery into household waste, fire or water.



DISPOSAL

This tool is manufactured without any physical or chemical substances which could be dangerous to health. The legal prescriptions for disposal of all the parts must be observed. The electrical assemblies should be dismantled so that the mechanical, electro-mechanical and electronic components can be disposed of separately.



DO NOT USE WATER

Do not use water or stream to clean the tool.



POWER SOURCE

Before starting preventive or corrective maintenance, remove the battery from the tool. Always inspect the electrical plug and cable on charger before use. If damaged, they must be replaced by qualified personnel.

TABLE OF CONTENTS

	Page		Page
General Safety Instructions	2	Parts List & Exploded Views	13
Specifications	5	Troubleshooting Guides	19
Major components	6	Tool Maintenance	22
Battery Charger	7	Maintenance Procedures	23
Battery Installation	7		
Operating Instructions	9		



MIPGRIP-114T Tensioner

PRODUCT IDENTIFICATION

A two letter date code can be found on every tool. Contact your local sales representative to assist in identifying the production month and year of the tool.

Date codes can also be used to properly identify service parts for this tool.

STRAP SPECIFICATIONS

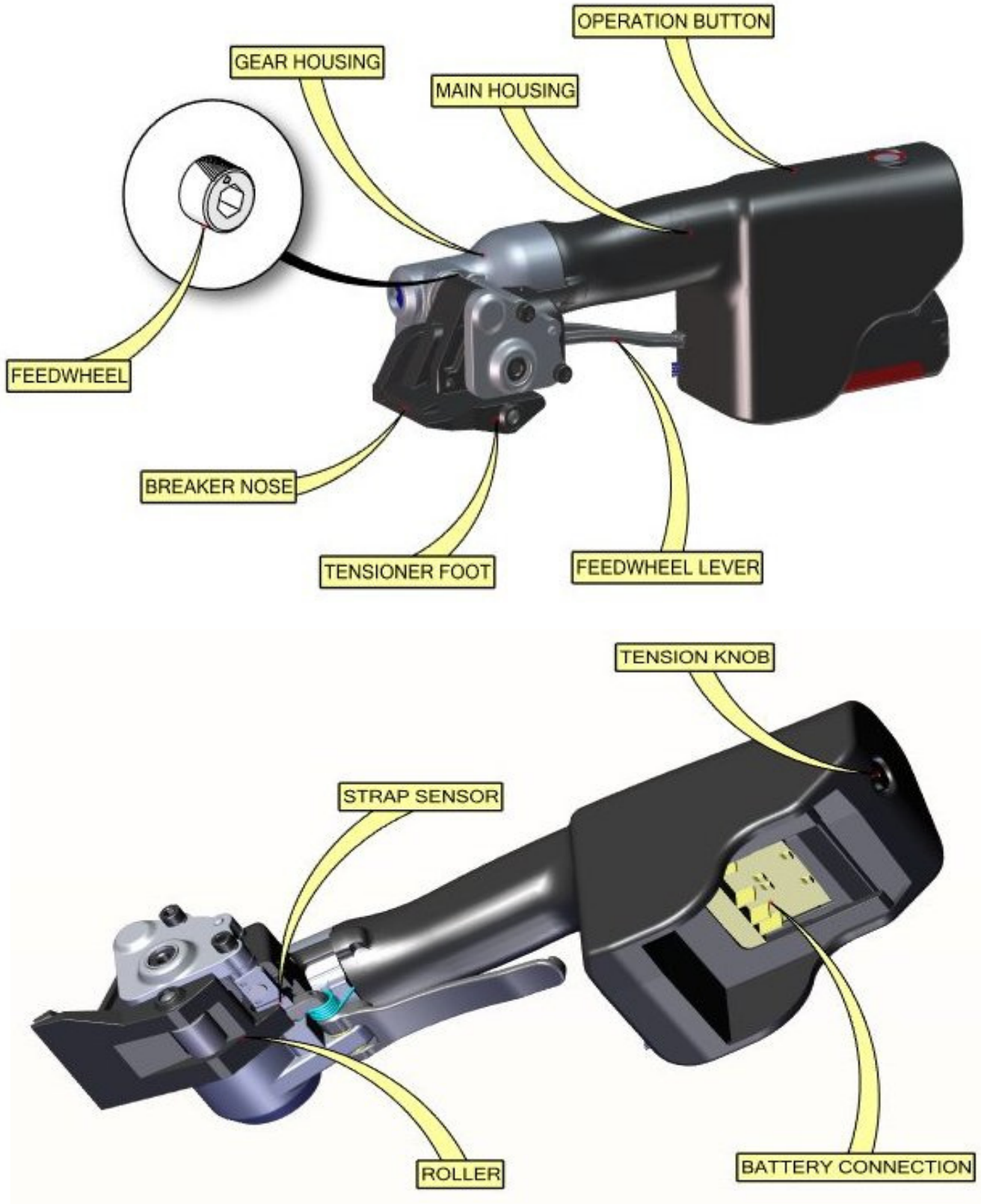
STRAP				
TYPE	WIDTH	THICKNESS	TENSION	SEALS
Steel	3/4" (19mm) to 1-1/4" (31.75mm)	.020"(0.5mm) to .031"(0.78mm)	800 to 1500 lbs. (3558 - 6672N)	S114PO3

Note: Clean the tool daily with a brush and apply light oil to all the moving surfaces. The feed wheel can be cleaned by holding a wire brush parallel to the face of the wheel while the tool is running.

TOOL SPECIFICATIONS

MODEL	DIMENSIONS	WEIGHT (W/ BATTERY)	SOUND PRESSURE
MIPGRIP-114T	15" X 6" X 6" (381mm X 152mm X 152mm)	7.5 LBS (3.4 kg)	26 DB

MAJOR TOOL COMPONENTS



BATTERY INFORMATION & CHARGING

Plug charger into your standard power outlet.

With no battery pack inserted, the charger's green indicator light will go ON. This indicates the charger is receiving power and the charger is ready for operation.

When you insert the battery pack into the charger. The charger's green indicator light will begin to "BLINK". This indicates that the battery is receiving a fast charge.

When the indicator light stops "BLINKING" (and becomes a steady green light) fast charging is complete. The battery pack is fully charged and can be removed from the charger.





The battery pack may be used even though the light may still be blinking. The light may require more time to stop blinking depending on temperature.

The purpose of the green light is to indicate that the battery pack is fast-charging. It does not indicate the exact point of charge. The light will stop blinking in less time if the battery pack was not completely charged.

When you begin the charging process of the battery pack, a steady red light could also mean the battery pack is too hot or too cold.

Fast charging is only possible when the temperature range of the battery pack is between 32F (0C) and 113F (45C). When needed, the internal fan of the charger will turn on to aid the charging process and speed.



	Charger is plugged in and receiving power.
	Battery is receiving a Quick Charge.
	Battery is too hot or cold to receive charge. Charging starts when the battery reaches the proper temperature.
	Battery cannot accept a charge. Replace battery.

As soon as the battery pack reaches the correct temperature range, the battery charger will automatically switch to fast charging.

If the red indicator light is "BLINKING", the battery pack cannot accept a charge.

- Check to make sure the battery pack is inserted to the charger properly.
- Clean the contacts of the charger or battery pack (e. g. by inserting and removing the battery several times) or replace the battery pack as required.

When the battery pack is fully charged, unplug the charger (unless you're charging another battery pack) and install the battery pack back into the tool.

INSTALLING A BATTERY

1. Hold the tool firmly with one hand.
2. Using your other hand, insert the battery into the tool with a sliding motion.
3. Firmly push the battery until fully seated. When fully seated the battery locks in place.
4. To remove the battery press the Red release button on the battery and slide out.



REPLACEMENT BATTERIES & CHARGERS

110 VOLT	BATTERY	CHARGER
	P/N 800293	P/N 800294

220 VOLT	BATTERY	CHARGER
	P/N 800293	P/N 800543

OPERATING INSTRUCTIONS

PLEASE NOTE: Do not operate tool without strap, as damage to the tool may occur.

WARNING

Wear safety glasses and gloves. Stand to one side of the strap when sealing.
Make sure all bystanders are clear before proceeding.

SELECTING OPERATING MODE

The tool is easily changed from Manual Mode to Automatic Mode. When in **MODE** selection the tool will NOT operate.

1. Verify a battery is installed properly into tool.
2. Turn Tension Control Knob all the way counter clock wise to enter **MODE** selection (Figure 1).
 - a. 1 flash on the Operation Button = Automatic mode
 - b. 2 flashes on the Operation Button = Manual mode

Note: When entered into MODE selection the Operation Button will flash the current mode.

3. Press the Operation Button to toggle between Automatic and Manual modes (Figure 2).
4. When correct mode is selected turn Tension Control Knob clockwise to the appropriate tension level (1 through 5).

Note: When exiting MODE selection the Operation Button will once again flash the selected mode. When the tension knob is set between 1-5, the tool is ready to operate.

5. Tool is ready to operate.

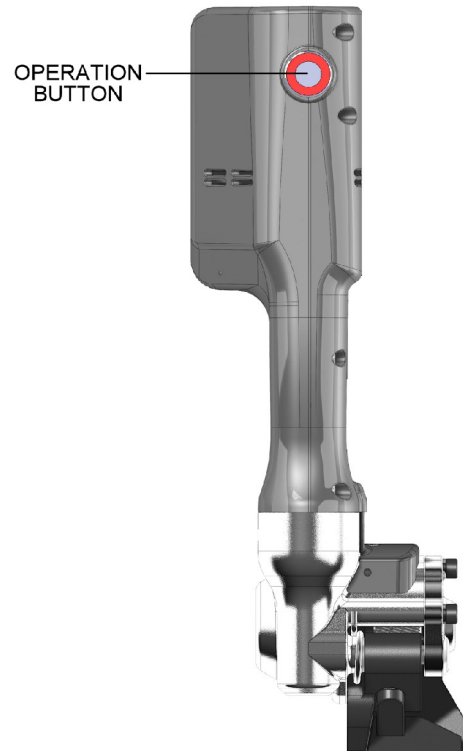


FIGURE 1



FIGURE 2

Note: When inserting a new battery the operation button will typically flash indicating what mode the tool is in. If the battery is changed very quickly within seconds the light may not illuminate.

OPERATING INSTRUCTIONS

STRAP TENSION

⚠ WARNING

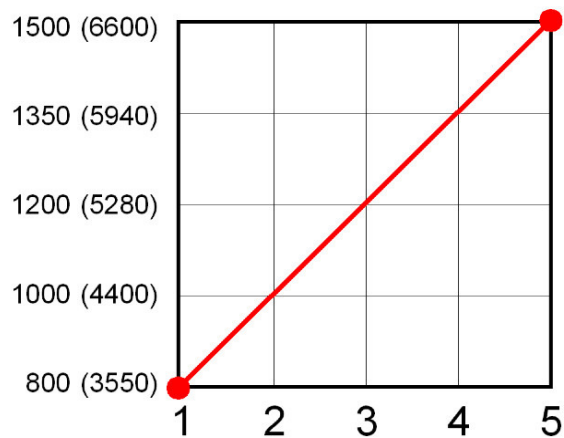
Failure to use the proper strap/seal/tool combination for the load being strapping can result in an improperly secured load which can result in severe personal injury. If you have any questions, contact your local sales representative.

Strap tension is controlled by setting the control on the rear of the tool. Adjust the tool to give the desired tension level. Rotate the tension control clockwise to increase strap tension.

Once the tool has been set, tension will be uniform on all straps provided the operator allows the motor to stall.



TENSION LBS. (NEWTONS)



MANUAL MODE OPERATION

1. Thread the strap from the dispenser through a S114PO3 seal.



Encircle the bundle and rethread the strap end through the seal.

2. Bend the strap end backwards as shown.



3. Squeeze the gripper lever to open the tool. Place the top strap into the front nose opening and slide the tool forward until it butts against the seal.



4. While standing to one side of the strap line, release the gripper lever and press the start button once. The tool will automatically tension the strap and hold it tight.

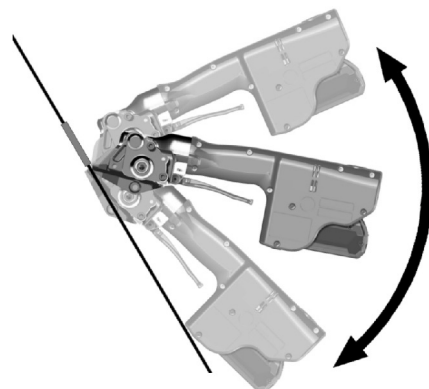


Notes: Press the start button again to stop tensioning. Press and hold the start button to reverse the tool.

5. Once the strap has been fully tensioned use a MIP approved tool to seal the joint.



6. Break the strap at the seal by swinging the tensioner up and down as shown. **DO NOT EXCEED 90° MOVEMENT. If the tool is swung too far forward, damage to the seal will occur and the strap will not break off.**



AUTOMATIC MODE OPERATION

1. Thread the strap from the dispenser through a S114PO3 seal.



Encircle the bundle and rethread the strap end through the seal.

2. Bend the strap end backwards as shown.



3. Squeeze the gripper lever to open the tool. Place the top strap into the front nose opening and slide the tool forward until it butts against the seal.



4. While standing to one side of the strap line, release the gripper lever. The tool will automatically start to tension the strap and hold it tight.

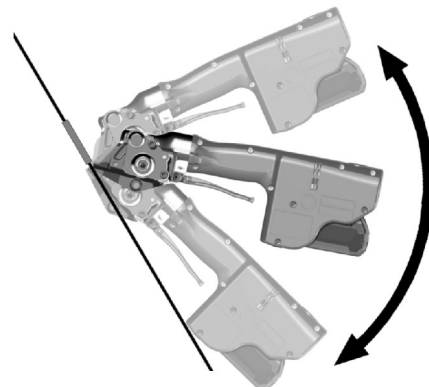


Notes: Press the start button again to stop tensioning. Press and hold the start button to reverse the tool.

5. Once the strap has been fully tensioned use a MIP approved tool to seal the joint.



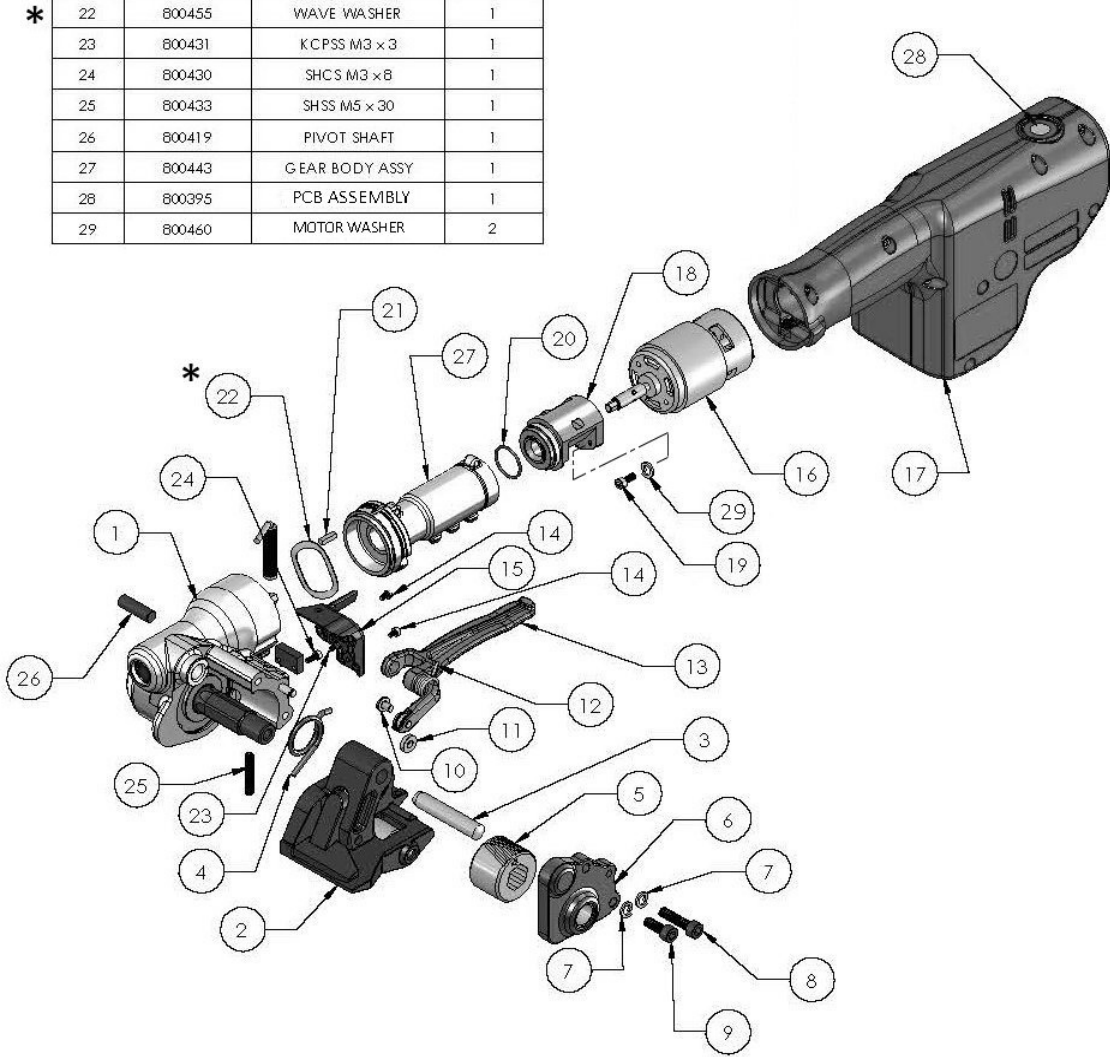
6. Break the strap at the seal by swinging the tensioner up and down as shown. **DO NOT EXCEED 90° MOVEMENT.** If the tool is swung too far forward, damage to the seal will occur and the strap will not break off.



PARTS LIST - MAIN ASSEMBLIES

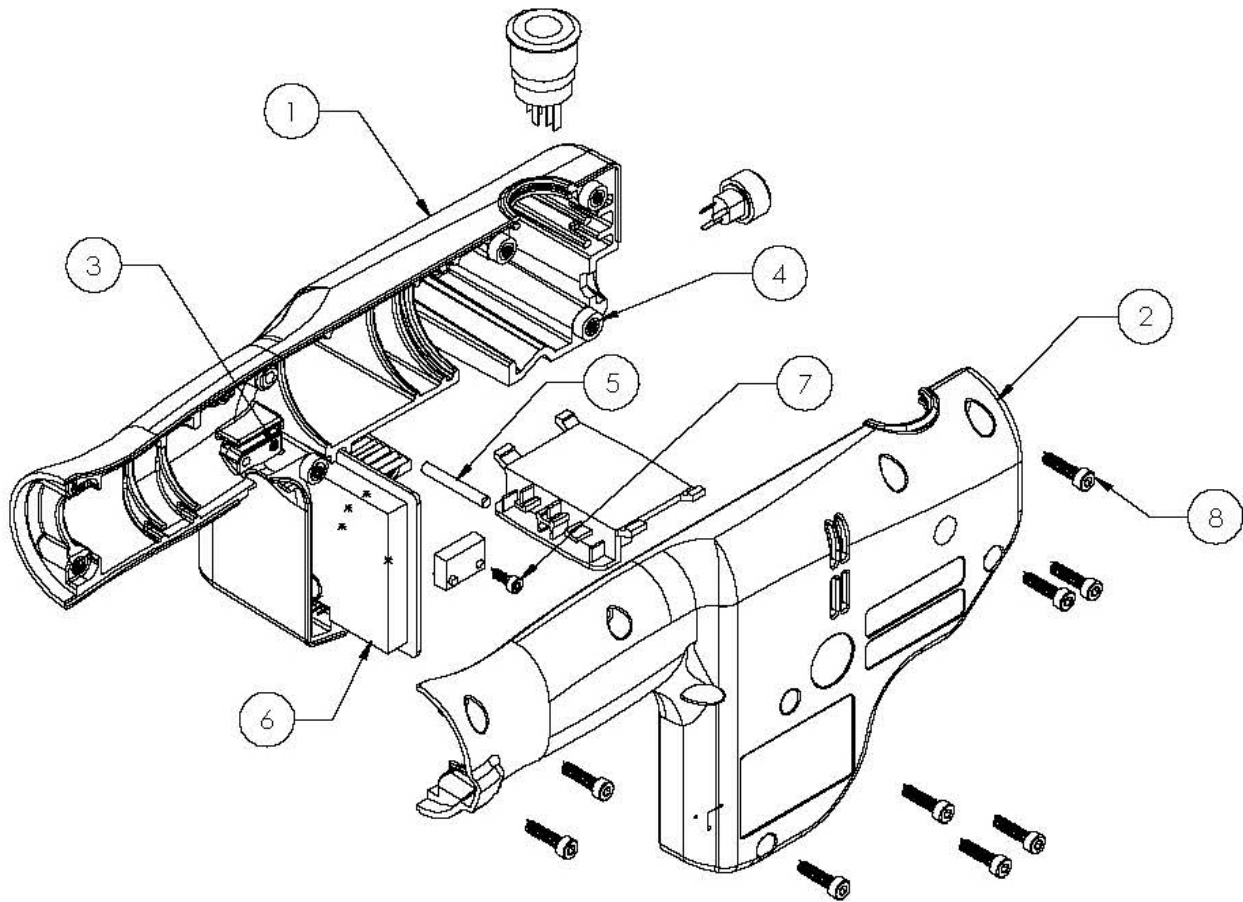
● Recommend spare parts items: 3, 4, 5 * Wave washer is not used on every assembly.

ITEM #	PART #	DESCRIPTION	QTY
1	800442	GEAR HOUSING ASSY	1
2	800445	BREAKER FOOT ASSY	1
3	800119	PIVOT PIN Ø10 × 55	1
4	800415	FOOT SPRING	1
5	423398	FEED WHEEL	1
6	800451	SIDEPLATE ASSY	1
7	005464	WASHER	1
8	423790	SHCS M6 × 25	1
9	423549	SHCS M6 × 18	1
10	400418	ROLLER SHAFT	1
11	800417	ROLLER	1
12	800416	SPRING	1
13	800412	RELEASE LEVER	1
14	800435	SHCS M3 × 5	2
15	800405	FRONT COVER	1
16	800447	MOTOR ASSY	1
17	800444	PLASTIC HOUSING ASSY	1
18	800396	MOTOR ADAPTER	1
19	800432	SHCS M4 × 12	2
20	800434	DASH 01B O-RING	1
21	800413	KEY	1
* 22	800455	WAVE WASHER	1
23	800431	KCPSS M3 × 3	1
24	800430	SHCS M3 × 8	1
25	800433	SHSS M5 × 30	1
26	800419	PIVOT SHAFT	1
27	800443	GEAR BODY ASSY	1
28	800395	PCB ASSEMBLY	1
29	800460	MOTOR WASHER	2



PARTS LIST - PLASTIC HOUSING ASSEMBLY (800444)

ITEM #	PART #	DESCRIPTION	QTY
1	800397	PLASTIC HOUSING LEFT	1
2	800398	PLASTIC HOUSING RIGHT	1
3	800424	BRASS INSERT M3	1
4	800423	BRASS INSERT M4	9
5	800426	DOWEL PIN 4 x 30	1
6	800395	PCB ASSEMBLY	1
7	800430	SHCS M3 x 8	1
8	800429	SHCS M4 x 16	9



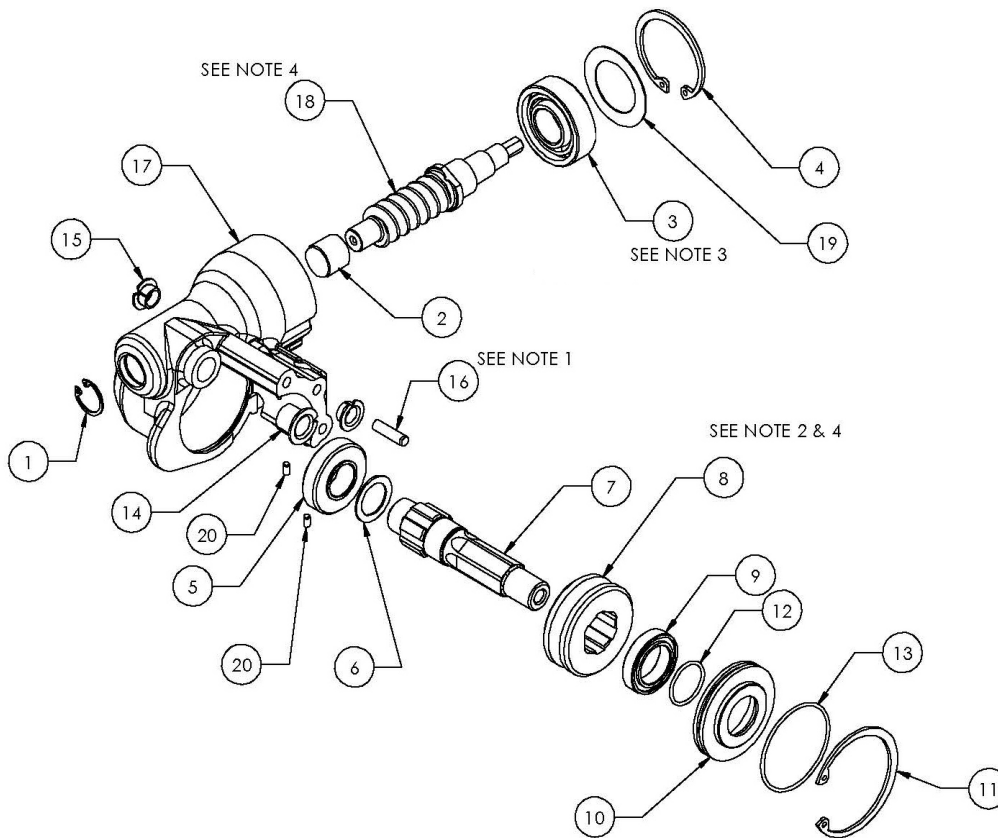
⚠ WARNING

Inspect all parts daily and replace them if they are worn or broken. Failure to do this can affect a product's operation and could result in serious personal injury.

PARTS LIST - GEAR HOUSING ASSEMBLY (800442)

- Recommended spare parts items: 8, 14, 15, 18

ITEM #	PART #	DESCRIPTION	QTY
1	008752	N5000-62	1
2	008751	NEEDLE ROLLER BEARING	1
3	008756	BEARING	1
4	800436	RETAINING RING	1
5	024038	BEARING	1
6	423533	THRUST WASHER	1
7	423501	FEED WHEEL SHAFT	1
8	800400	WORM GEAR	1
9	423515	BEARING	1
10	800448	COVER	1
11	250731	TRUARC RING	1
12	423531	SAE 18 ORING	1
13	256755	SAE 30 ORING	1
14	800120	FLANGE BEARING	1
15	800401	FLANGE BEARING	2
16	800438	DOWEL PIN M5 x 20	1
17	800408	GEAR HOUSING	1
18	800399	WORM	1
19	800420	SPACER	1
20	800456	DOWEL PIN M3 x 6	2

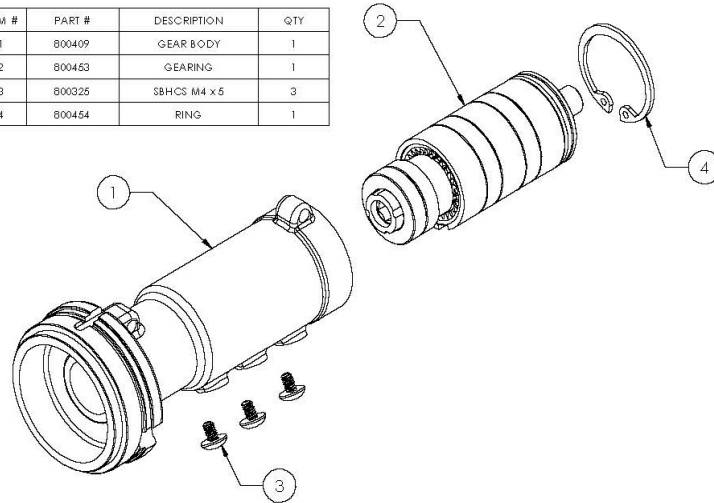


Notes:

1. Loctite 609 (Green) or equivalent.
2. Part side with lettering must be installed facing gear housing.
3. Install bearing with face lettering facing away from gear housing.
4. Matching gear set.

PARTS LIST - GEAR BODY ASSEMBLY (800443)

ITEM #	PART #	DESCRIPTION	QTY
1	800409	GEAR BODY	1
2	800453	GEARING	1
3	800325	SBHCS M4 x 5	3
4	800454	RING	1

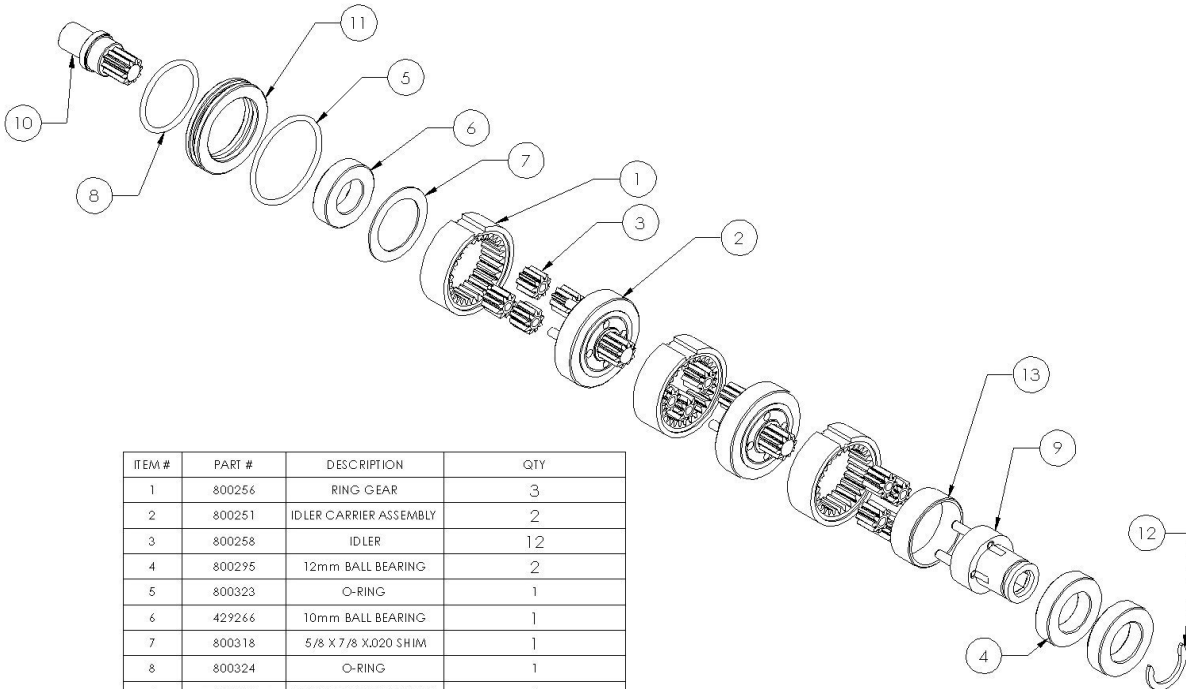


WARNING

Inspect all parts daily and replace them if they are worn or broken. Failure to do this can affect a product's operation and could result in serious personal injury.

PARTS LIST - GEARING (800453)

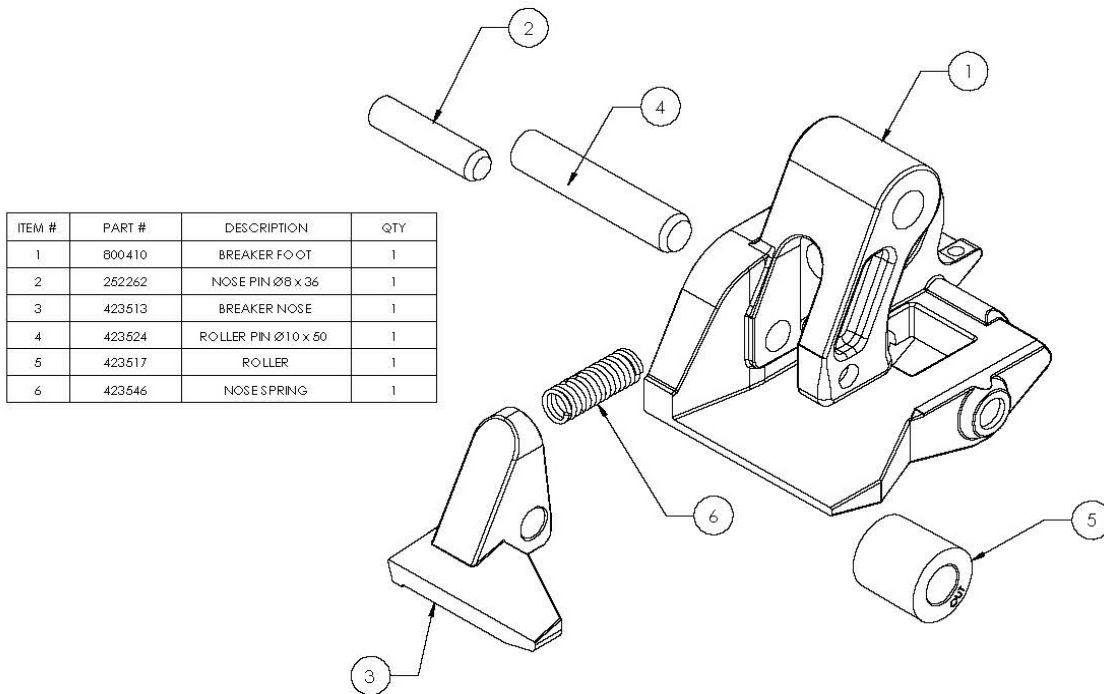
- Recommended spare parts items: 3



ITEM #	PART #	DESCRIPTION	QTY
1	800256	RING GEAR	3
2	800251	IDLER CARRIER ASSEMBLY	2
3	800258	IDLER	12
4	800295	12mm BALL BEARING	2
5	800323	O-RING	1
6	429266	10mm BALL BEARING	1
7	800318	5/8 X 7/8 X .020 SHIM	1
8	800324	O-RING	1
9	800253	IDLER CARRIER ASSEMBLY	1
10	800403	DRIVE PINION ASSEMBLY	1
11	800407	GEAR END PLATE	1
12	800458	RETAINING RING	1
13	800457	SPACER	1

PARTS LIST - BREAKER FOOT ASSEMBLY (800445)

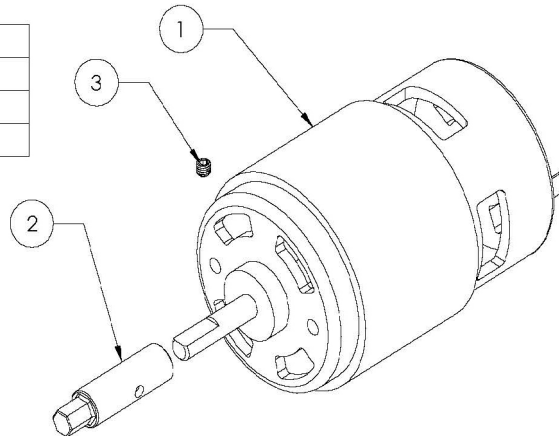
- Recommended spare parts items: 1, 2, 3, 4, 5



PARTS LIST - MOTOR ASSEMBLY (800447)

- Recommended spare parts items: 1, 2, 3

ITEM #	PART #	DESCRIPTION	QTY
1	800422	MOTOR	1
2	800404	DRIVE SHAFT	1
3	800431	KCPSS M3 x 3	1



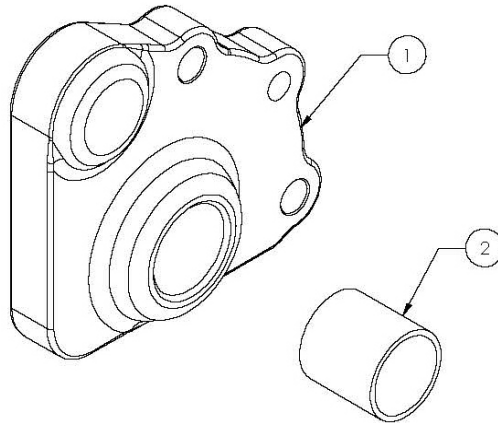
⚠ WARNING

Inspect all parts daily and replace them if they are worn or broken. Failure to do this can affect a product's operation and could result in serious personal injury.

PARTS LIST - SIDE PLATE ASSEMBLY (800451)

- Recommended spare parts items: 2

ITEM #	PART #	DESCRIPTION	QTY
1	800411	SIDE PLATE	1
2	800451	BUSHING	1

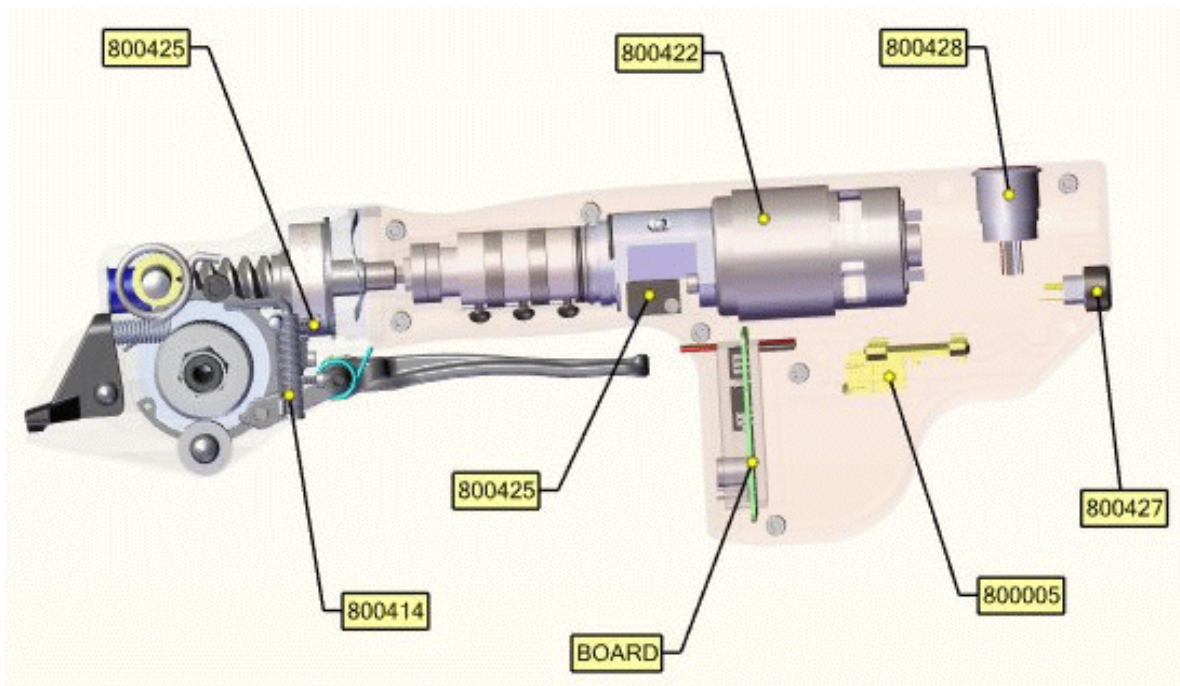


PARTS LIST - ELECTRICAL COMPONENTS

<u>Individual Part</u>	<u>Service Part</u>	<u>Qty</u>	<u>Description</u>
800428	800461**	1	Operation Button
800422	800462**	1	Motor
800425*	800463**	2	Switch
800414*	-	1	Strap Sensor
800395	-	1	PC Board
800005	-	1	Contact Plate
800427	800472**	1	Tension Knob

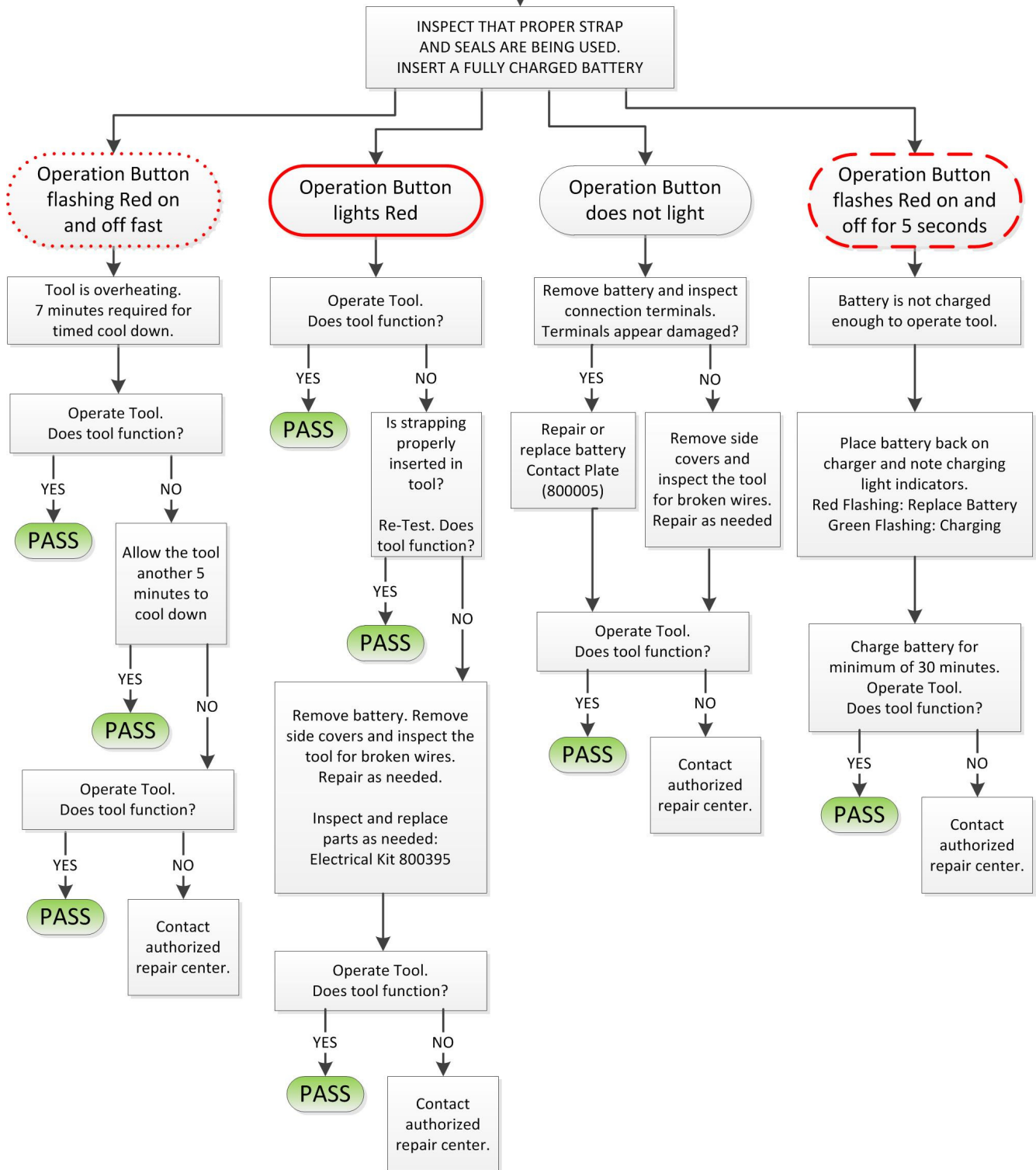
* Items that include wires.

** Items that include wires and quick-disconnect terminals.



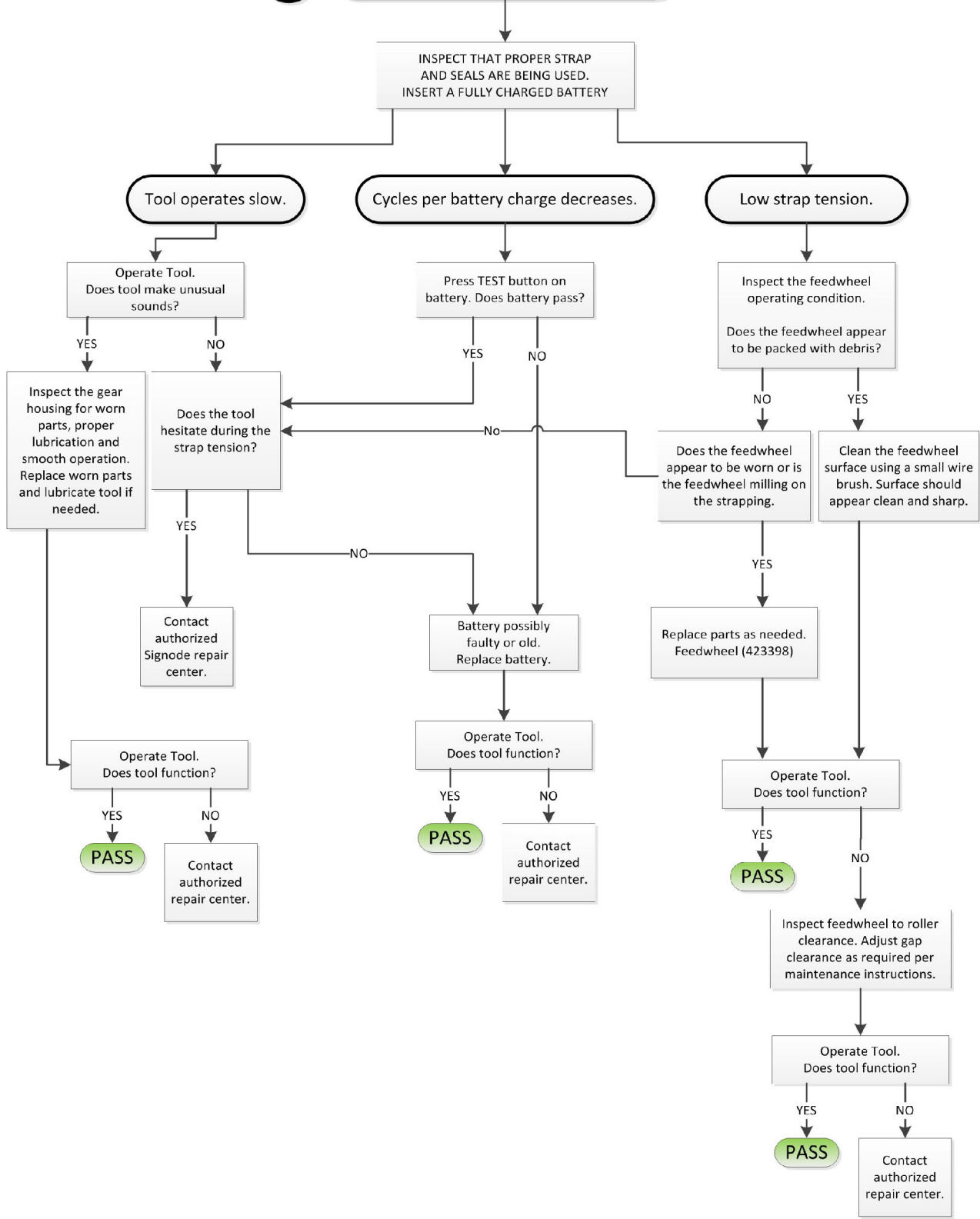
TROUBLESHOOTING GUIDES

1 TOOL DOES NOT OPERATE







TROUBLESHOOTING GUIDES

2 INCONSISTENT TOOL OPERATION

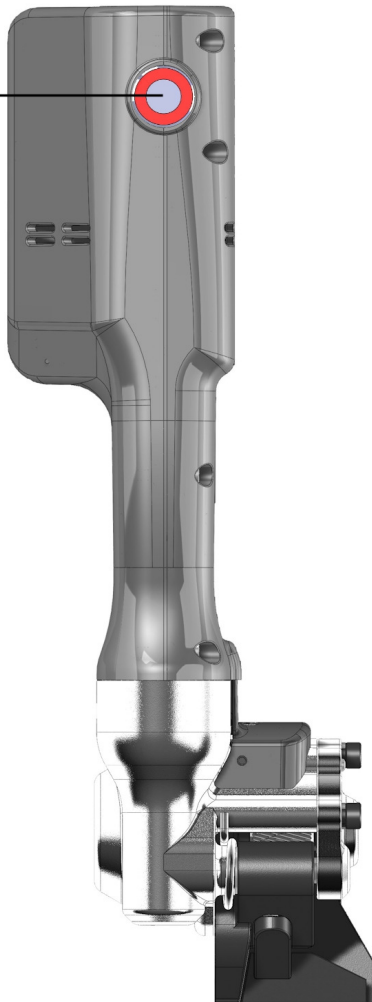


TROUBLESHOOTING - INDICATOR LIGHTS



	Charger is plugged in and receiving power.
	Battery is receiving a Quick Charge.
	Battery is too hot or cold to receive charge. Charging starts when the battery reaches the proper temperature.
	Battery cannot accept a charge. Replace battery.

OPERATION
BUTTON



LOW BATTERY CHARGE

LED flashes 1 second on, one second off, etc. (tool will continue to operate, charged battery will be needed soon)

DEAD BATTERY

LED flashes on for 5 seconds, 5 seconds off etc. (tool will not operator, charged battery required)

THERMAL OVERLOAD

LED flashes .25 second on, .25 second off etc. (tool will not operator, ~5 minute cool off period is needed)

TOOL MAINTENANCE

GENERAL

The most common reason for poor tool performance and incorrectly formed straps joints is improper tool maintenance. The easiest way to determine if a tool is performing correctly is by inspecting the strap joint. Having a tool maintenance program is a simple task which consists of three parts. First, a quick daily inspection of the tool for any worn or broken parts. Secondly, keep each tool on a schedule of service intervals for cleaning and lubrication. Third, when problems do occur, use the troubleshooting guide to properly determine and fix problems before they lead to more serious tool conditions. Each of these three tasks have been outlined for this particular tool, read and understand all information for improving the life and performance of the tool.

TOOL INSPECTION

Visually inspect the exterior of the tool on a daily basis. Decreased tool life can be prevented by early detection of broken parts. Replace all broken parts with new parts. Review any part removal, replacement & adjustment instructions found in this manual.

SERVICE INTERVALS

Tool component wear is affected by the environment, strap/seal quantity and strap gauge which the tool is subjected to. All critical moving components of the tool should be inspected periodically. Broken parts can increase sealing effort, leading to additional component wear and produce lower joint strength.

Inspect the components of the sealing mechanism when:

- A. Joint does not appear as shown in this manual or visually it is detected that the joint is not all formed or formed improperly.
- B. Sealing effort seems sluggish or tool is difficult to remove from strap.
- C. The number of cycles from one battery charge decreases.
- D. When scheduled.

WARNING

If there is any question that joint formation is not as shown or is suspect, it is important that you contact your tool representative immediately.

TOOL LUBRICATION

Tools use a variety of greases and oils, all of which can be ordered through MIP. When ordering indicate tool model, part number and name.

THREAD SEALANTS

Tools are assembled using a variety of thread sealants, all of which can be ordered through MIP service using the appropriate description and part number.

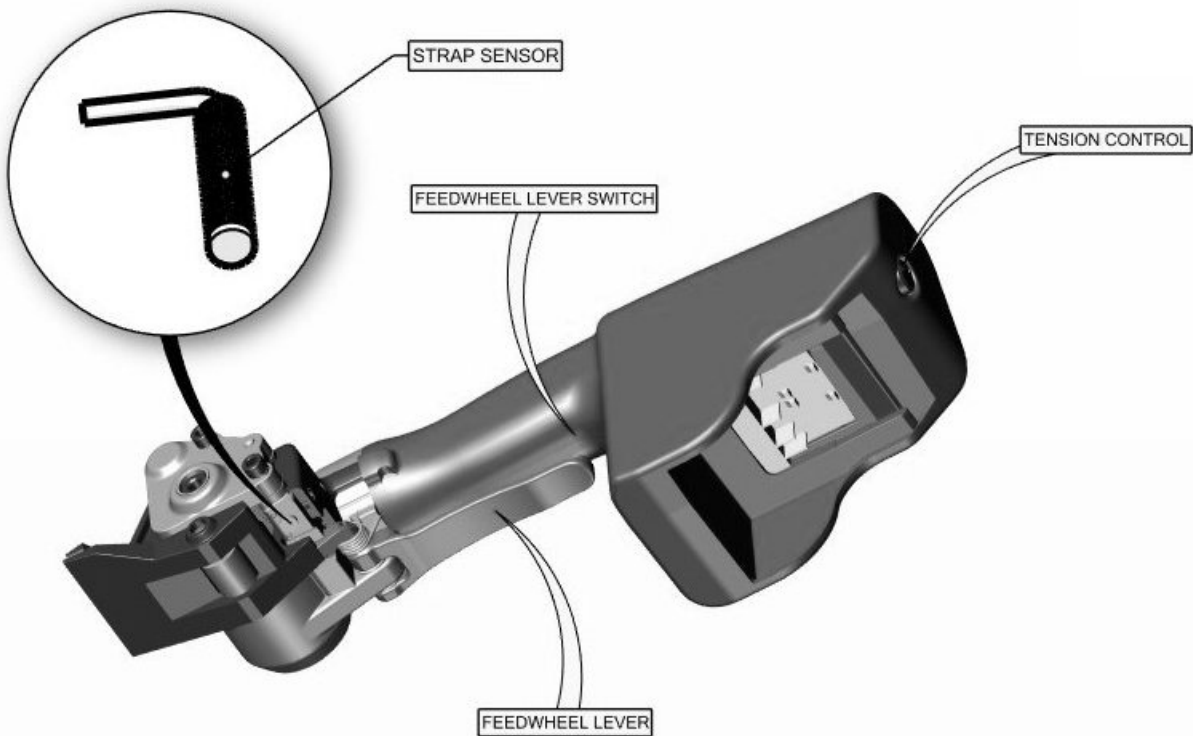
- Loctite #222 (Purple), Part No 422794.

MAINTENANCE PROCEDURES - CONTROLS DIAGNOSTIC

Use the following procedure to diagnose a possible faulty or broken control switch. 2 small pieces of strapping are needed for this procedure.

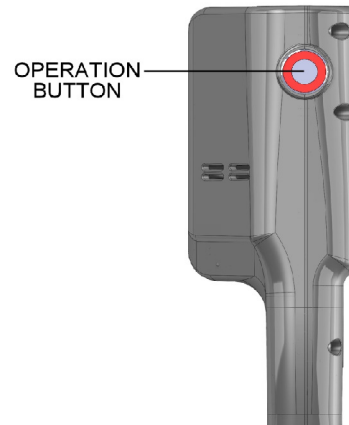
The diagnostics feature is enabled for 30 seconds. If all components have not been verified within 30 seconds repeat steps 1 through 4 and resume.

1. Remove battery from tool.
2. Turn tension control knob pointer to 1.
3. Squeeze feedwheel operating lever and insert a small piece of strap under the feedwheel. Strap must be only under the feedwheel and NOT cover strap sensor.
4. Insert battery while holding the operation button for approximately two seconds. LED will flash 1 time indicating the button is working correctly.
5. Turn tension control knob pointer to 6. LED will flash 5 times indicating tension knob is working correctly.
6. Rotate tension control knob back to level 1.
7. Turn the tool on it's side. Place a small piece of strap over the strap sensor. If sensor is working correctly LED will flash 4 times.
8. Using your finger, press and hold the feedwheel lever switch. If working correctly the LED will illuminate 2 times.
9. Lastly, remove the small piece of strap from under the feedwheel. LED will flash 3 times indicating the home switch is working.



MAINTENANCE PROCEDURES - CYCLE COUNTER

Use the following procedure to access the cycle count of the tool. This is the total number of times the tool has been operated and can aid in diagnosing problems or service schedules. 1 small piece of strapping is needed for this procedure.



The tool counts from 0 to 999,999. The counter displays the number of tool cycles by flashing the Operation Button LED with an approximate 2 second delay between digits (LED does not illuminate). **The counter will always display 6 digits even if some digits are leading zeros.**

1. Remove battery from tool.
2. Turn tension control knob pointer to 1.
3. Squeeze feedwheel operating lever and insert a small piece of strap under the feedwheel. Strap must be only under the feedwheel and NOT cover strap sensor.
4. Insert battery while holding the operation button for approximately two seconds. LED will flash 1 time indicating the button is working correctly.
5. Wait 30 seconds.
6. Cycle counter codes begin to be displayed as follows. Example, a tool that has run 1253 complete cycles.

0	▶	0	▶	1	▶	2	▶	5	▶	3
FIRST DIGIT		SECOND DIGIT		THIRD DIGIT		FOURTH DIGIT		FIFTH DIGIT		SIXTH DIGIT

Individual digits are displayed as follows ▶

Once the cycle counter terminates the Operation Button LED will flash rapidly for one second. Now the tool is ready to operate normally.

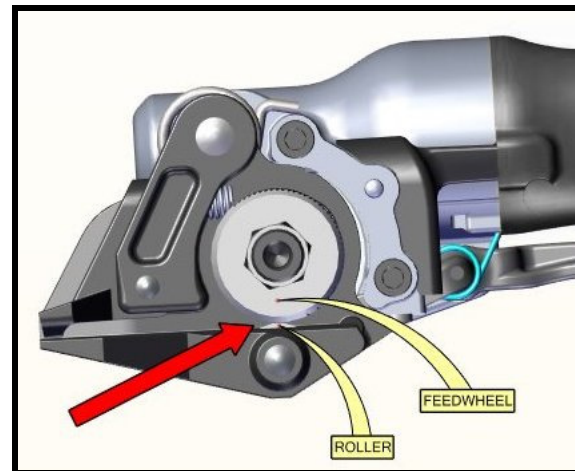
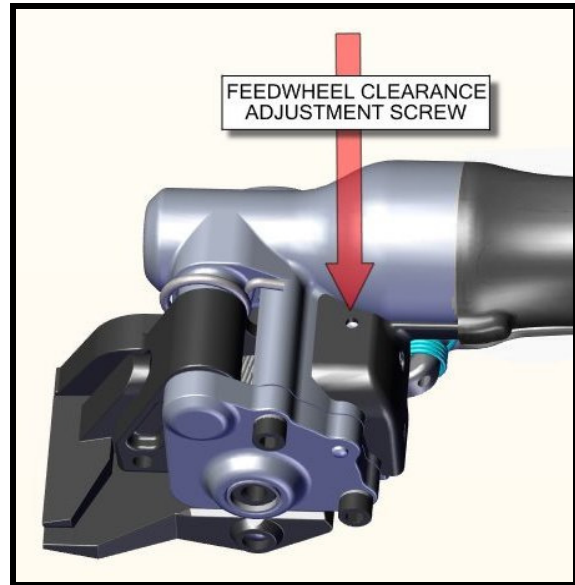
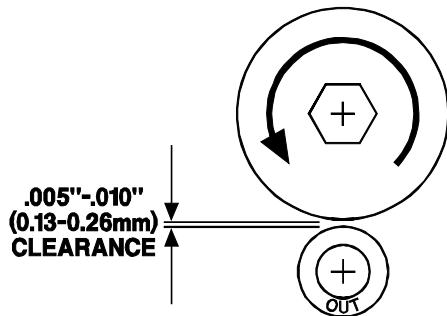
The cycle counter procedure can be terminated at any time by pressing the Operation Button or by pulling the Feedwheel Lever.

Digit	LED Flash
0	On 1.5 seconds
1	Once
2	Twice
3	Three times
4	Four times
5	Five times
6	Six times
7	Seven times
8	Eight times
9	Nine times

MAINTENANCE PROCEDURES - FEEDWHEEL CLEARANCE

The feedwheel to roller clearance may require readjustment if the feedwheel or roller has been replaced. The feedwheel clearance should also be inspected during routine tool maintenance procedures. Adjust the feedwheel clearance as follows:

1. Using a 2.5mm hex wrench turn the adjustment screw which can be accessed through the top of the tool as shown.
2. Turn the adjustment screw clockwise for greater clearance and counter-clockwise for less clearance. Turn the adjustment screw only in 1/8 turn increments. After each 1/8 turn, test the tool from proper operation.



Midwest Industrial Packaging Terms and Conditions

Purchasing; Transactions:

All order placed will be processed within 48 hours during normal business hours. Orders after business hours will be processed the next business day. Customer will receive order notification and shipping status within 48 hrs. (Normally with order confirmation) All sales are final unless return is deemed acceptable by a MIP client services supervisor. Credit will be issues upon receipt and inspection of item(s). Non-new condition items will not be credited. Return shipping is responsibility of buyer. Any special MIP promotion for distributor sales will also be listed FINAL SALE.

Freight Policy:

Orders are shipped F.O.B. shipping point unless otherwise noted. All orders are inspected prior to shipment. To protect your interests, it is strongly suggested that you check items before accepting delivery. All prices reflect Buyer's net cost in U.S. currency. The prices do not include freight, applicable federal, state, and local taxes, charges and duties, or special crating requirements for export shipment. Buyer shall pay all such costs, taxes, charges, and duties.

We reserve the right to change prices, product specifications or eliminate a product without written notice.

Special Shipping Instructions:

Please note any special shipping instructions are required for additional special services and rates will apply. Standard freight terms apply to all shipments. Every account has the option to use their preferred Pick up or UPS collect account as noted on official purchase order.

Returns Policy:

Goods are not to be returned without written permission from our company. Please allow 3-4 weeks for manufacturer evaluation for credit if applicable. Items must be returned in new, unused sale condition, all returns must be in their original packaging with a authorization number. All items must be returned in the full quantities in which they were ordered and we reserve the right to reject returns on used or mishandled products.

A 25% handling charge shall be made on all goods returned, as well as reconditioning charge if required, as determined by the company. Custom made & Special order products are non-returnable. Claims for discrepancies in shipment must be made within 7 days of receipt of merchandise or they will not be accepted.

Damaged Shipments; Risk of Loss:

Buyer should thoroughly inspect all items for shipping damage before accepting delivery. If damage has occurred, Buyer should note the extent of the damage on the freight bill and call Midwest Industrial Packaging and the truck company immediately. MIP responsibility for loss and damage ceases when the products are accepted for shipment by the carrier.

All orders are inspected prior to shipment. To protect your interests, it is strongly suggested that you check items before accepting delivery. Carriers and MIP will not accept claims if damage is not noted at the time of delivery.

We collect tax for all accounts if a current TAX certificate and number are not on file with our finance department.

For more information please contact us at our Toll Free number 800-800-5104 above or email cs@miptools.com

Considerable effort has be made to ensure that this product conforms to our high quality standards. However, should you experience any difficulties, please contact your Sales Representative providing samples and the manufacturing code specified on the tool.

Thank you for your help.

MIDWEST INDUSTRIAL PACKAGING
3700 W. Lake Avenue, Glenview, Illinois 60026